

SYMPOSIUM



A Publication of Shimer College

Fall 2010



INSIDE

LEAVE A LEGACY	3
THE NEXT GENERATION	4
FACULTY NEWS	5
A G.I. AT SHIMER	6



Shimer College

3424 South State Street
Chicago, IL 60616
312-235-3545
alumni@shimer.edu

WEBSITES:

www.shimer.edu
alumni.shimer.edu

MANAGING EDITOR:

Aaron Garland
Director of Communications &
Alumni Relations

WRITERS & EDITORS:

Mohini Lal, Noah LeBien,
Jonathan Timm, et al.

PHOTOGRAPHY & GRAPHICS:

Cassie Sherman, Christin Smith,
Jonathan Timm, et al.

FROM THE PRESIDENT

My name is Ed Noonan. For those who do not know me, I am a Shimer College Trustee Emeritus. On April 19, 2010 I was chosen as Interim President by the Board of Trustees.

I am also a husband, a father and grandfather, an architect, a Chicagoan, and a lover of books. I am also happy to say "I am a Shimerian."

I enjoy working with highly talented fellow Shimerians to help us through this transition and forward into a sustainable system of growth for Shimer, with financial balance.

So what have I seen in the first six months?

I've seen that the Shimer ideals – study hard, be honest, and be polite – are as strong as ever. The Great Conversation really works here. Nobody does it better.

On my first day as President, I renewed faculty contracts and then had lunch with the community and spoke about the work ahead, articulating plans to:

- Reconfirm and maintain the Hutchins Plan at Shimer College, which needs more scholarships;
- Establish a fund for the faculty and staff, who need more stability and renewal; and
- Establish a fund for the future, which will be what we make of it.

The same day, an alumni-led online fundraiser began an outpouring of support. You welcomed a New Dawn for Shimer by giving and pledging \$200,000 in a matter of days. The results were wonderful, but not surprising. Shimer, through its long history, is sustainable because its friends always come through.

This May, we celebrated the graduation of twelve highly qualified students. You should have heard and seen the addresses by graduates Heath Iverson and Raya Carr. They spoke – and danced – from the heart, speaking about their Shimer times. Now they have joined a long list of graduates who Shimer has changed both as learners and as people.

This fall I was also happy to welcome the newest group of students. Thirty-seven bright and exciting young people joined us at Shimer. It has been good meeting these new students, some of whom you will read about inside this issue of the *Symposium*. It is a reminder of how great Shimer can be and why we all care about it so much.

It is an honor to be part of this – I'm having good times. We are all part of encouraging humanness in young scholars, and in ourselves as well.

Thanks,

Ed Noonan

Robert Maynard Hutchins in his Bedell Lecture at Kenyon College in 1948:

An educational institution should be a community.

A community must have a common aim, and the common aim of the educational community is the truth. It is not necessary that the members of the educational community agree with one another. It is necessary that they communicate with one another, for the basis of community is communication.

*On the cover: Student Trillian Bergmann ('13) holding a self-made icosahedron.
Photo by Cassie Sherman.*

LEAVE A LEGACY: THE HOSTETTER SOCIETY

Shimer College helped make me the person I am today. It helped mold me from a young man with little direction to a thinker with a love of learning, understanding, and analysis.

I want to ensure Shimer's existence for future generations. I want to welcome more students into the Great Conversation to instill the same kind of life-long love of learning that I have enjoyed. **I want that to be part of my legacy.**

That's why I am joining my fellow alumni in forming the **Hostetter Society**. The Society will honor and acknowledge individuals remembering Shimer College in their estate plans. **Remembering Shimer in your estate leaves a legacy for generations to come.**

We can all join the Hostetter family, for whom the society is named, in leaving a legacy.

Elizabeth Hostetter came to Shimer as a student in the 1860s and worked with the College throughout the early years; Frances Shimer named her to the original Board of Trustees.

Her daughter, A. Beth Hostetter also attended Shimer and returned to teach in 1903. A. Beth was active at Shimer for the next 60 years, serving as Dean of the College for over 20 years and acting as President on multiple occasions.

A. Beth Hostetter was still around during the 50's when I was at Shimer. She was not as active as she once was, but she still worked in the alumni office. She was very active with her fellow alumni, including serving as an officer of the first Alumni Association formed in the 30's.

The Hostetters left a legacy of service to Shimer College. They committed their time, love, and care to Shimer and its students for nearly a century. I'm pleased to join them in leaving a legacy at the College that gave me so much - won't you join me?

Join me as a founding member of the Hostetter Society.

Sincerely,

Ed Walbridge ('56)

Alumni Association President & Founding Member of the Hostetter Society

Board of Trustees

Edie Barschi ('75)
Erik Boneff ('12), Weekday Student
Sally Brown ('65), Vice Chair
Taylor Buck ('11), Weekday Student
Barry Carroll ('66)
Kathleen Chappell ('76)
Bob Chitester
Shirley A. Conibear ('68)
Joann DiGennaro
Timothy Eident ('13), Weekend Student
Christopher English ('72), Treasurer
Phil Farina ('73)
Albert Fernandez, Faculty
Peter Hanig ('71)
Sandy (Schmidt) Hockenbury ('74)
Dennis Katz
Mary Lou Kennedy ('74), Secretary
Robert Keohane ('61)
Charles A. Lang
Linda Levy ('78)
John Marienau
Christopher B. Nelson, Chair
Edward Noonan, President
Eric O'Keefe
Peter Schroth ('66)
Daniel Shiner ('77)
Barbara Stone, Faculty
Rebecca Sundin ('99)
Edward W. Walbridge ('56)



Elizabeth Hostetter

BECOME A FOUNDING MEMBER

If you have remembered or would like to remember Shimer College in your estate plans, please let us know. Check the box on the enclosed envelope or contact Shimer College at alumni@shimer.edu or 312-235-3512.



A. Beth Hostetter



Most college students have fond memories of the traditional senior year of high school, but for **Mohini Lal**, an early entrant at Shimer, senior year seemed unnecessary. "I was ready for college and all it has to offer me," says Mohini of her decision. "I demanded more than my surroundings could give."

Mohini, a first year student from McKinney, Texas, has quickly become involved in planning her future. She is set to enter Shimer College's B.A. to J.D. program with Chicago-Kent College of Law which allows students to spend their last year at Shimer as a first-year graduate student. Mohini says, "The B.A. to J.D. program definitely appealed to me when I first applied to Shimer. I love both getting ahead and Shimer's environment, so going to graduate school in Chicago with Shimer's help is just amazing."



Taylor Buck from Tacoma, Washington, says, "Shimer functions on a platform of community involvement." She should know. Taylor is finishing her final year at Shimer and is a student representative to the Board of Trustees. "Students should be pre-

pared to participate in the community, especially the Assembly, to get the most out of their Shimer experience," she notes.

Taylor is focusing on the Social Sciences at Shimer and plans to enter a Ph.D. program in Feminist Theories when she graduates in the spring. After nearly three years here, Taylor says, "The most memorable experiences for me revolve around seeing how involved and passionate Shimer students can become, no matter what forms it takes -- student meetings, long discussions, and sometimes heated debates."

THE NEXT GENERATION

You can read more student profiles online at:

[www.shimer.edu/aboutshimercollege/
studentprofiles.cfm](http://www.shimer.edu/aboutshimercollege/studentprofiles.cfm)



Erik Boneff is a third year student from Royal Oak, Michigan who is a student representative to the Board of Trustees. Although Erik has been involved in Shimer community life for quite a while, he swears, "I still find myself in this same position of having my intense and frustrating confusion lead to the beginnings of understanding each time I step into a Shimer classroom."

Erik is focusing on the Social Sciences at Shimer and plans to study philosophy in graduate school. "To my mind, the Shimer education is an ideal one for such an endeavor because of its ability to produce an extremely well-rounded and critically thinking graduate," Erik poses. "Shimer's broad and demanding course requirements serve as a fertile breeding ground for those interested in studying the human individual in a social context."



SaraLouise Dawson is a first year student at Shimer from Corrales, New Mexico. The size and community of Shimer appealed to SaraLouise. "When I visited Shimer and throughout my application process, I was treated like a member of the community." She adds, "The size of classes really adds to the

learning environment. It's this group of people that you can go up to and talk about your classes or something awesome that happened or anything, really. It's a family."

While SaraLouise considers herself a "bookish person" and plans to concentrate in Humanities, she wishes to someday be a firefighter. Shimer may not be the obvious choice, but SaraLouise is adamant that it's the perfect place for her. "What I'm gaining from my education at Shimer that will help me pursue my goal of being a firefighter -- besides the arm muscles I'll get from carrying my books around -- is a better understanding of myself, community, and what it means to me to be of service."

FACULTY IN WRITING

The Intersection of Science & the Humanities

Shimer College is pleased to announce that faculty members **Jim Donovan** and **Eileen Buchanan** were recently published in *Substance, Judgment, and Evaluation: Seeking the Worth of a Liberal Arts Core Text Education*, a compilation of selected papers from the Twelfth Annual Conference of the Association for Core Texts and Courses (ACTC).

Jim's paper, "Teaching Scientists to See: A Possible Bridge Between C.P. Snow's Two Cultures," directly addresses the issues in integrating such very distinct subjects as science and the visual arts. "It's about teaching the visual arts to science students and getting words and pictures working together," says Jim.

In "Michelangelo and the Copernican Revolution," Eileen concentrates on combining science, writing and art to create a cohesive history for students. "The thesis I was trying to work with was that what people pro-

duce visually -- whether it be a pot, tapestry, painting, or graph -- shows who they are and what is important to them," Buchanan said. "There are certain intellectual currents going on and they affect us even when we don't know they're going on."

Both faculty members spoke of a long-term interest and research in the topic, and of the thought that goes into writing the papers for the conference. Buchanan remarked, "I think it reminds you of what you're asking your students to do."

Jim and Eileen's articles share the Shimer view that the factually ordered world of science and math not only coexist, but must merge with the often imaginary, theoretical world of philosophy and art. "The conventional academic setting is departmentally orientated," Dean David Shiner commented. "Here, it's about interdisciplinary education. For us, that's just habit, but for others, it's unknown and impressive."

WELCOME NEW STAFF

B David Galt joins Shimer College as Associate Dean for Student Life. B David brings to the position over 20 years of diverse experience in student life including residence life, student development, campus programming, educational leadership, career resources, orientation, multicultural affairs, and service learning.

In this newly expanded position, B David is taking the lead in creating an environment which allows students to take full advantage of the College's academic program and fosters personal growth outside of the classroom. He is responsible for activities related to student activities and programming, career guidance, and internship development.

Amanda Cadogan is Shimer College's newest Admission Counselor. Formerly an Admission Counselor at the Adler School of Professional Psychology in Chicago, Amanda's experience with liberal arts education goes back to her days at Sarah Lawrence College, where she received a degree in Humanities, and at Wadham College in Oxford. She later received a Master's Degree from the University of Chicago.

Noah Kippley-Ogman ('07) has returned to his alma mater, but this time as a full-time staff member in the Office of Advancement. After graduating from Shimer, Noah worked in the non-profit sector, focusing on individual fundraising with community organizations such as Gads Hill Center.

FACULTY NOTES

Stuart Patterson attended a three-week National Endowment for the Humanities Summer Institute on "Teaching the History of Political Economy." Held at Duke University and led by the faculty of Duke's Center for the History of Political Economy and guest scholars, it covered the history of political economic thought from Plato to major current theorists.

David Shiner presented a paper at the spring Annual Conference of the Association for Core Texts and Courses (ACTC) entitled "The Significance of Montesquieu's Spirit of the Laws for Western Political Philosophy."

Barbara Stone spent three weeks this summer in Bonn and Berlin (Germany) at a professional development seminar for German teachers. The seminar, sponsored by the Goethe Institute, included participants from 17 different countries.

Harold Stone journeyed to Rome this past summer to examine the historical and literary significance of 15th-century discoveries of sculpture. This research was made possible by a Fraser Baron Memorial Scholarship from the National Association of Scholars.

Bev Thurber had a linguistics paper entitled *Voicing of Initial Interdental Fricatives in Early Middle English Function Words* approved for publication. It is tentatively scheduled to appear in the March 2011 edition of Journal of Germanic Linguistics. Recently she also had a paper on the subject of Viking crampons approved pending revision. Both will be available in the upcoming year.

A G.I. AT SHIMER: THE Story of Bill Suitts ('48)

In 1945, after serving in the army, the young Bill Suitts returned to his home state of Illinois. Bill had enlisted shortly after the Pearl Harbor attacks. In the army, he was one of the first people to train navigators using the new RADAR technology. He also participated in numerous bombing missions.

Like many of his fellow soldiers, Bill returned home in hopes of finding a college to attend under the G.I. Bill. The flood of returning G.I.'s filled the entering classes at most schools for fall '46, but then a friend told him about Frances Shimer College -- Shimer College's official name at the time -- and how the once all-girl college was going to be admitting 36 G.I.'s for the fall.

Bill hitchhiked to Mt. Carroll and spoke to the President, Dr. Albin C. Bro, about the possibility of gaining admission to Frances Shimer College. Unfortunately, Bill was told that 36 G.I.'s from the college's home county, Carrol County, had already been selected. Bill was from four counties away in Galesburg.

After that apparent dead end, Bill went to the local diner in Mt. Carroll and struck up a conversation with the manager. When the manager heard Bill's story, he let Bill in on a secret:



Bill Suitts (bottom, third from left) with his fellow veterans in 1946

Dr. Bro's passion was international relations, but no student at the college was interested in that area of study. To get home he had to go back by the campus. As he was heading back, he found Dr. Bro walking between buildings. He intercepted Dr. Bro and introduced himself, bringing up his interest in studying international relations. Shortly thereafter, Bill was accepted as the 37th G.I. for the fall of 1946.

Though Bill did not go on to study international relations, he has been very successful. While attending at Shimer, Bill coached the Shimer basketball team

and was a member of the college theater group, Green Curtain. After a year, Bill moved on to Knox College where he graduated and then went on to a Masters in Business from the University of Colorado. He was handed his business diploma by Dwight D. Eisenhower.

Bill founded Colorado Mortgage Company in 1958 and still serves as its president. The company provides financing for residential projects. His personal life has also been very fulfilling, having been married for 63 years to his wife Beth. They have three children and nine grandchildren.

MEETING OF THE MINDS

By: David Shiner



David Shiner & John Hirschfield (left)

It has been many years since I first heard Shimer alumni from the 1950s and 1960s sing the praises of **John Hirschfield**. Given my longstanding

interest in Shimer history, I often wondered what it would be like to meet this remarkable professor and scholar. But, given the vagaries of life and the fact that Professor Hirschfield himself never visited Shimer, it appeared unlikely that such a meeting would ever take place.

Then, in the last issue of *Symposium*, I learned that Professor Hirschfield had led Shimer's first-ever study-abroad program, the Shimer Paris Project. I had known nothing about that program, and reading the article galvanized me into action.

I telephoned Professor Hirschfield at his home in Baltimore. The hearty voice on the other end of the line sounded like that of a man much younger than his 90 years. I asked if he would be willing to meet me in Baltimore, where I was planning to attend a weekend conference. He said he'd be delighted. So off I went.

Read the entire interview online at:
alumni.shimer.edu/meetingofminds

1950's

Ingeborg (Biby) Gubler Casey ('57) has written a memoir, *The Heart Moves in a Circular Direction: A Story of Healing*, which recounts her long relationship with her schizophrenic mother. *The Heart Moves in a Circular Direction* won second prize in the 2008 Arizona Authors Association literary contest.

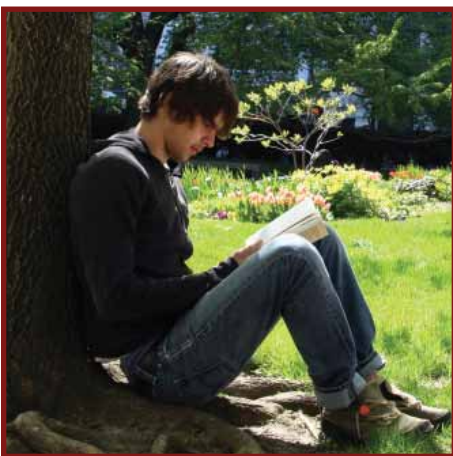
1960's

Ken Knabb ('66) edited and co-translated Ngo Van's *In the Crossfire: Adventures of a Vietnamese Revolutionary* (AK Press). *In the Crossfire* looks at the decades of struggle against the French Colonists leading up to the Vietnam War. For more information, including online excerpts, see www.bopsecrets.org/vietnam/index.htm.

Ellen Rosenthal ('66) will be retiring from John Hopkins Hospital this October after working in the Information Technology division for 38 years.

Steve Talbott ('66) published a new eBook called *How Much Should I Borrow for College?* It shows students how to explore careers, find out what they pay, and then make a real-world calculation of a reasonable amount to borrow for college. Because it is an eBook you can click away to find information. The book is at www.howmuchshould-borrow.com.

Quentin Schroeter ('67) received the national Lionel Albridge Award in June in Washington, D.C. The award recognizes a person with mental illness for courage, leadership, and service.



ALUMNI NEWS

1980's

William Burns's ('80) latest book, *A Brief History of Great Britain* has appeared from Facts on File.

1990's

David Koukal ('90) has been a teacher of philosophy for almost twenty years. He is presently an associate professor of philosophy and director of the honors program at the University of Detroit Mercy. He has published articles on how the work of various phenomenologists (Husserl, Heidegger, Sartre and Merleau-Ponty) relates to expression, the body, imagination, media, pedagogy, politics, and various technologies.

Jon Cotner ('99)'s collaborative book *Ten Walks/Two Talks* is now available. In the spirit of philosophical wandering, it combines a series of sixty-minute, sixty-sentence walks around New York City with a pair of roving dialogues.

2000's

Amy Pezderic ('03) is attending graduate school at Loyola University Chicago, where she is a Ph.D. candidate in New Testament and Early Christianity. She is also a "professor of record," teaching Introduction to the Bible at Loyola.

Will Robinson ('09) recently accepted an Americorps VISTA position at Gads Hill Center working with the organization's mentor programs.

Heath Iverson ('10) is attending graduate school at the University of Edinburgh in Scotland.

Read and submit alumni news at:
alumni.shimer.edu/classnotes

IN MEMORIAM

Rita Atkins (former faculty)
Peggy Calder ('88)
Randall Clutter ('74)
Winifred (Vanderwalker) Farbman ('53)
Art Hilgart ('53)
Neal Johnston ('60)
Robert Kryl ('57)
Natalie "Nan" (Brown) Law ('33)
Michel Nicola (former faculty)
William Henry Sparboe, Jr. ('68)
Rebecca (Grimes) Stearns ('45)
Tracy A. Wilson ('77)

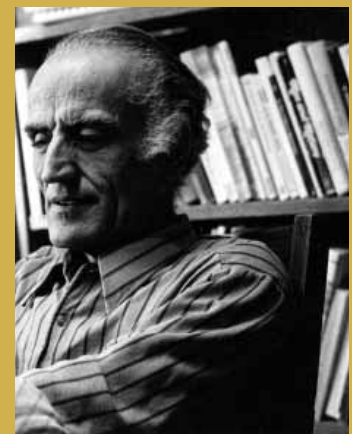
MICHEL NICOLA, former professor of Natural Sciences at Shimer, passed away peacefully at his home on September 7, 2010.

A faculty member at Shimer from 1967-81, Michel served as Dean from 1977-78 and helped introduced semester projects into the curriculum.

Michel spoke passionately about emphasizing the hope that a great books education transformed the way students thought about themselves and the world. He insisted that students should have the chance to work on something personally important to them and report back to the faculty at the end of the week.

His legacy also continues through the faculty even today. An article he wrote in the 1970's was recently read and discussed by the current faculty.

He will be missed by all of his family and friends, including those at Shimer.



THE CLASS OF 2010

On Saturday, May 8th, Shimer College celebrated the graduation of the Class of 2010. The day was a celebration of the end of the journey that was their undergraduate careers, but also the beginning of another great journey.

Dr. Edward "Rocky" Kolb delivered the keynote address. Rocky is the Arthur Holly Compton Distinguished Service Professor and Chair of Astronomy and Astrophysics at the University of Chicago. He is also a member of the Enrico Fermi Institute, and the Kavli Institute for Cosmological Physics. Rocky's research deals with the application of fundamental physics to the very early universe.

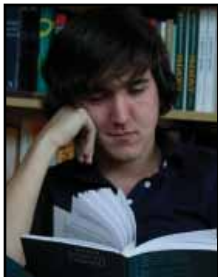
Two highlights of the ceremony were the addresses by graduates Heath Iverson and Raya Carr who spoke - and in one case, danced - to express their gratitude for their Shimer experience and the Shimer community.



President Ed Noonan & Dean David Shiner congratulating graduate Michael Mason.

To read more: alumni.shimer.edu/commencement2010

Or listen to speeches online: www.youtube.com/user/TheShimerCollege



3424 S. State St.
Chicago, IL 60616
800.998.9705
WWW.SHIMER.EDU

Everyone Can Afford to Help:
REPORT FROM THE PRESIDENT AND THE DIRECTOR OF ADVANCEMENT

Dear fellow Shimerians – alumni, parents, and friends,

For decades, the Shimer faculty have been the College's major donors – they have given freely of their time, their passion, and their expertise to generations of students.

In the past few years, the College has received significant funding from an anonymous benefactor whose generosity made possible the move to Chicago and the transition to financial stability.

And just last year, Trustee Shirley Conibear ('68) challenged you to match her generosity and you delivered, welcoming students into the Great Conversation.

This year, let's match our own gifts and more. This year, together, let's be the anonymous donor.

Your friends and fellow alumni are rising to the challenge – find them on the attached list of the generous donors whose support keeps Shimer strong.

And keeping Shimer strong is important. Marla, a new student this fall, told me that she came to Shimer because it's a place that will prepare her for life and not just an occupation. She values the education that's helping her become "clear-headed, thoughtful, and analytical."

Many alumni remember the moment their perspectives on the world changed during a Shimer class. And that's happening already this semester. Marla points to the way her vision of American culture changed when reading Ruth Benedict's Patterns of Culture. "I already can see myself thinking differently," she said, "and I've only been here for two months!"

Each and every one of the individuals listed in this report is our partner in teaching Marla and her classmates to think and preparing them to live.

This year the rest of us must rise to Shirley's challenge and to that of the anonymous donor. In years past, alumni, parents, and friends have given \$250,000-\$350,000 each year, but this year \$750,000 must come from you and your friends.

If you gave \$100 last year, can you give \$300 this year? If you gave \$500 last year, can you give \$1,500 this year?

As you can see from the following chart, there's an important role for donors who can make gifts at every level. If you can be one of those at the top of the chart, by all means, join us. If you can join us in the bottom line, Shimer students need your welcome into the Great Conversation.

We are pleased to report an early pledge for this year of \$100,000 – at the top of the chart – from a longtime friend of Shimer.

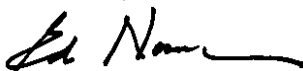
But a gift at any level is essential. Students at Shimer benefit every day from your support, whether it's \$100 or \$100,000.

And this year, your gift of any size is essential. The College is up for accreditation this year, and we will be asked whether alumni and friends recognize the value of Shimer's education by making an annual gift. Now is the time to tell the world that Shimer is valuable and meaningful, and is important to protect and preserve.

Every check in any amount is a 'vote' for Shimer: get your friends and classmates to stuff this ballot box with whatever amount they can give!

On behalf of an institution we all cherish, thank you for your votes of support!

Sincerely,



Ed Noonan
President
Trustee Emeritus



Don Moon
Director of Advancement
President Emeritus

PS: Use the enclosed envelope to send your gift in today – or give online at alumni.shimer.edu/give

**Gift Sizes Required to Raise \$750,000 Annually
from Alumni, Trustees, Friends of the College, and Corporations & Foundations**

Gift Size or Range	# Gifts Needed	\$ Subtotal	Cumulative Totals
\$100,000	1	\$100,000	\$100,000
\$ 75,000	1	\$ 75,000	\$175,000
\$ 50,000	2	\$100,000	\$275,000
\$ 25,000	4	\$100,000	\$375,000
\$ 10,000	12	\$120,000	\$495,000
\$ 5,000	16	\$ 80,000	\$575,000
\$ 2,500	24	\$ 60,000	\$635,000
\$ 1,000	36	\$ 36,000	\$671,000
Under \$1,000	many	\$ 79,000	\$750,000

Gift Size To repeat, Shimer needs \$3 for each \$1 given in the past.

Participation While larger gifts are vital, **gifts of any amount** carry important leverage *beyond* their size because of *the importance of participation* and its influence on major donors, foundations, and accreditors.

HONOR ROLL OF DONORS

January 1, 2009 through August 31, 2010

\$100,000 & up

Anonymous
James K. Billman

\$25,000 - \$99,999

Aequus Institute	Sarah L. Brown ('65)	Roy D. Landstrom ('72)
Edith B. Barschi ('75)	Shirley A. Conibear ('68)	Chris Rufer
	Mary Lou Kennedy ('74)	

\$10,000 - \$24,999

Claudia Allums	Geoffrey Goldsmith ('63)	Eric O'Keefe
Frank H. Buckley	Peter ('71) & Alice ('72) Hanig	Philip Pappas ('75)
Roger E. Burke ('57)	Sandy (Schmidt) Hockenbury ('74)	Patrick J. ('54) & Sally Parker
Chitester Creative Associates	Carson Holloway	Peter G. Peterson Foundation
Robert M. Cordova ('74)	David W. Juday ('67)	Milton Rosenberg
The Davee Foundation	Rabbi Dennis Katz	Daniel Shiner ('77)
Joann DiGennaro	Charles Lang	Deborah Sperberg ('59)
Bradley ('77) & Corliss Englert	John Marienau	Bud Vesta
William Escamilla	Kathleen McCreary	Edward W. Walbridge ('56)
Matthew J. Franck	Michael McDonald	Sarita Warshawsky
	Christopher B. Nelson	

\$5,000-\$9,999

Anonymous
Joe Bast
Prof. Carol S. Bruch ('60)
Meda Lane & Christopher English ('72)
Philip Farina ('73)
D. Grant Gilbert ('67)

Seth Grosshandler ('79)
Michael L. Keiser
Walter A. Laiblin ('73)
Kendra D. Little ('98)
Edward Noonan
Kathleen Van Paasschen ('67)

Alice & Gordon Patterson
Prof. Nicholas J. Pippenger ('65)
Mark Robinson ('97)
The Shimer College Foundation
Ruby K. Worner Charitable Trust

\$2,500-\$4,999

Alan ('59) & Gail Dowty
John Meech & Cathy Guzolek ('90)
Robert ('61) & Nannerl Keohane
Thomas K. Lindsay

Dan J. Marcum ('66)
Barbara Marshall ('50)
Alan & Andrea Robbins
F.A.W. Shimer Trust

Harry Shiner
David Koukal ('90) & Sharon Vlahovich ('89)
Lynda M. Weinstein ('76)
Steven L. Zolno ('71)

\$1,000-\$2,499

Dick Family Foundation
G. Scott Ellsworth ('76)
Robert Falk ('65)
Albert I Farbman
Harold Eugene Frye ('56)
Stephen M. Gauger ('75)
Jay S. Goldenberg ('57)
Benjamin ('54) & Joyce ('55) Gorman
Craig & Linda ('67) Grannon
Samuel J. Henderson ('98)
Marc Hoffman
Katherine Todd & Burt M Jamison
Kim Holmes ('04) & Timothy Kaczocha ('80)

The Kippley-Ogman ('07) Family
Jim Lazar ('73)
Linda S. Levy ('78)
Louis F. Linden ('69)
Martin L. MacIntyre ('56)
The Rev. Don P. Moon
Marcia ('75) & William Nelson
Michel & Eva Nicola
Charles Pak ('57)
Stuart Patterson
Ann Perbohner ('76)
Arthur ('67) & Brenda Powers
Jack D. Reed

Janna Roop
Sydney R. Rose ('63)
Ellen R. Rosenthal ('66)
Patricia A. Samuel ('63)
William James Suitts ('48)
Rebecca A. Sundin ('99)
Paul Taxey
Elizabeth Todd ('09)
Eileen Trost ('72)
Craig Unrath ('78)
David Shiner & Nancy Wallace
Phyllis A. Westberg ('62)

\$500-\$999

Emiko E. C. Banfield ('66)
William E. Burns ('80)
Theodore J. Century ('64)
Sarah R. Delezen ('01)
Janice Y. Domanik
Robert ('63) & Judith Duncan
Edward D. Eastham ('75)
Susan Eissler ('69)
Jonathan Goldman ('70)
Kay Grace
Rev. Barbara J. Groth ('74)
Carol S. Haney ('98)
Ralph A. Hanson ('62)

Laura E. Hewitt ('02)
Arthur ('53) & Carolyn Hilgart
Michael D. Jones Esq. ('74)
Jerome S. Kalur ('66)
Catherine Knuth ('63)
Hyung Joo & Yoo Hyun Lim
John S. McAleer ('89)
William E. McKenzie Jr. ('74)
Kenneth L. Molinelli ('69)
John W Neal
Eric Nicholson ('72)
Nancy J. Nickel ('76)
Eliot ('75) & Jeanne Nusbaum
Charles & Christine ('69) Plantz

M. Louise Ripley ('68)
David N. Rockwell ('68)
Randhir Sahni
Daniel J. Sandin ('64)
Loren ('54) & Marna Shapiro
Sydney ('61) & Christina ('62) Spiesel
Laura Strache
Nora Sullivan ('06)
DJ Turner ('63)
Christopher ('87) & Lisa Vaughan
Peter B. Veerhusen ('69)
Alan V. Washburn ('56)
Paul A. Werner ('69)

\$250-\$499

Philip ('64) & Ruth Bain, Terry Baker ('11), Rev. Gaye G. Benson ('63), Rabbi Philip J. Bentley ('66), Alan Botts ('88), Donald Breyer, Margaret A. Busch ('64), Timothy S. Cole ('75), David N. Counter ('73), E. Philip Dahlberg ('56), Concettina M. D'Aversa ('72), Ernest W. Devlin ('75), Kirstin Anderson Draba ('77), Howard L. Fields ('60), Barton G. Fleming ('70), Dan B. Franks ('67), Kenneth G. Freund ('62), Anja M. Helmecke ('97), Mary M. Herman ('91), Lori ('88) & James Hughes, J. Robert ('56) & Christine ('56) Israel, David M. James ('69), James A. Kelly ('54), Stephen H. Kiblinger ('59), Sarah Kimmel ('96), Theodore Krug ('08), Patrick McClellon, Deborah McCoy, Kimball Nedved, Theodore L. Odendahl ('75), Donald A. Overton ('56), The Rev. Ronald W. Partridge ('64), Peter Piper ('98), Deborah S. Roberts ('79), Michael G. Roche ('67), Ron I. Rothbart ('66), Nicholas Schmitt ('08), Rachel Shiner, Robert ('68) & Mary ('68) Sibley, Maria Sosa ('72), Joseph R. Starzyk ('79), Wendall W. Wilson, James W. Yeazel II ('78)

\$100-\$249

Ryan & Sharon Alexander ('07), Melanie Allen ('77), Kevin ('83) & Sheila Anderson, Carla Arnell, William O. Arnold IV ('06), Siddhi R. Aryal ('99), Robin G. Ashton ('71), Erik Flindt Badger ('97), Webster C. Ball ('63), Ann B. Bausman ('78), Irene Beisiegel, Alice M. Bernstein ('68), Jason Blaesing ('00), Charles S. Blank ('58), Abbey M. Botkin ('74), Judith S. Briden ('68), Owen Brugh ('06), Elisabeth Buchanan ('88), Mary Buckley ('80), Carolyn Burch ('47), Vicky Campbell, Kathleen D. Chappell ('76), Bruce E. Colvin ('67), Michael J. Cwik ('75), Sara L. Davila ('99), Russell Davis, Rev. Richard S. Deitch ('65), Basil J. Detineo ('67), Janet DeWilde ('38), James A. Ditsworth ('75), Andrew M. Ditton ('72), Mary S. Dohnalek ('66), Ralph W. Dolan ('70), Ann Dolinko, Jim & Julie Donovan, Carole ('55) & Ronald Dorris, John W. Empfield ('72), Winifred Farbman ('53), Leslie Fedota ('75), Paul Fjelstad, William ('63) & Carole Fonvielle, Ian Foutch, Elizabeth H. Fraser ('76), William J. Frazee ('67), Martha A. Garber ('74), Thomas A. Gaudette Jr. ('76), Ned ('56) & Rita Gaylin, Richard ('63) & Julie W. ('62) Gloede, Redd F. Griffin ('60), Pierre Guibor MD, PC ('62), Diane C. Gutenkauf ('80), Ellen Haffner, Richard & Susan Haley, Heidi Hanson ('00), Karen Anne Harbert ('66), Stephanie Hart ('72), Judith S. Hata ('54), Steve Heller ('71), Laura Henderson, Peter ('69) & Margaret Hewitt, Neil M. Heyen ('78), Mary & Bruce Hinkle, Walter Hipple, Justinian R. Hobor ('05), Sharon K. Hoffman ('89), Matt Hoffman, Joseph P. Hogan ('77), Kathleen Hoppe, Kazuhiro Horie ('72), Paul K. Huntwork ('57), Joy Ibsen ('62), The Honorable Randolph Jackson ('66), Patricia L. Kelly Jackson ('70), H. Richard Jewell ('70), Paul ('72) & Cheryl Jordan, Cassandra Kaczocha ('00), Terri P. Katsulis ('62), Ron Kidd, Barbara B. King ('66), Ken Knabb ('66), David Z. Kohn ('72), Joan ('56) & Dan Kunitz, Adele Kurtz, Bridget A. Laffey ('01), Denise Lane ('08), Jeffrey & Lisa Laske, Donovan K. Leyden ('57), Baruch G. Lowenberg ('69), Lindsay D. Lucke ('69), David Lukens, Matthew MacDevitt ('06), Jan C. Maher ('66), Frank W. Malinowski ('72), Karen A. Martin ('65), David ('95) & Elisabeth ('95) Matthews, Evelyn ('68) & John McGuinness-Allman, Donna J. Meaden ('69), Kristi Rosenberg Miller, Richard ('75) & Elizabeth ('75) Miranti, The Rt. Rev. James W. Montgomery, Sys T. Morch ('63), Sammie Moshenber ('72), Victoria Muehleisen ('86), Jacqueline K. Mundkowsky ('60), Fred & Erika Musser, Jo Ann Noble ('66), Linda Karr O'Connor ('77), Edward J. Okin ('67), John M. Van Paasschen ('65), Ann L. Palmer ('62), Jolanta & Sarunas Peckus, Paul B. Peloquin ('67), Evelyn & Jeffrey Pendleton, Patricia ('67) & Ambrose Potrzebowski, Robert C. Powell ('68), Patricia J. Rand ('50), Jennifer Read ('72), Nancy ('67) & Bernett Reinke, William Craig Rice, Chris Richardson ('04), Jolene D. Riordan ('03), Kathryn Jane Ripley ('68), Kenneth ('69) & Julia Rocke, Robert G. Rosenberg ('05), Dick & Sandy Sakurai, Nina Gitz Sandlin ('72), William & Josephine ('69) Schreiber, Peter W. Schroth ('66), Jerold A. Scott ('82), Leonard Shane ('64), John L. Shaw ('67), Suzanne E. Shelton ('80), Jayne B. Sherman ('68), Jack Sigel, Monica P. Simons ('03), Karen M. Sorensen ('75), George & Carolyn Soule, Kate R. Soule, Laurie Spiegel ('67), Jason Stahl ('00), Paul Stein ('71), Susan M. Steiner ('78), Harold Stone, Anonymous, Rexford J. Styzens ('54), Michael G. Sussman ('98), Shelley Sutherland ('80), Susan K. Swafford ('67), Janet R. Terner ('58), Noah C. Tesch ('03), Joel Timm, Jean Todd, Avinere & Janet Toigo ('55), Janet Toigo ('54), Robert Trigg ('09), Tucker L. Viemeister ('70), Charles T. Walbridge ('60), Franklin ('59) & Darlene Weingarten, Michael D. Weinman ('98), Edward & Victoria ('67) Welch, Anna Vinsonhale Weldon ('06), Steven Werlin, Peter J. Weygandt ('71), Betsey S. Whitman ('58), Tineka Wireman ('05), Jared S. Wisbrod ('05), Gregg J. Wright ('74), Christopher ('78) & Jennifer ('80) Wu, Jerome Yanoff ('61)

\$50-\$99

Jon Amato, Gail Beck, Tina R. Birnbaum ('68), Mary K Bowman ('07), Diane B. Bracken ('64), Eileen Buchanan, Karen & Lon Bussell, Mary & Armand Capdevielle, Colleen E. Cerny ('10), Gerry & Kristy Champagne, Reuben Chapman ('56), Denise N. Costa ('97), Robert C Davis III, Ariel ('97) & Donathan Dedolph, Shaun S. Devlin ('56), David G. Feltus ('70), Albert Fernandez, Daniel E. Fischmar ('68), Daniel J. Fraser ('80), Christopher Gillen, Lene & Einar Graff, John L. Graham ('68), Epatrick Hayden Harding, F. Michael Harris ('65), Margaret Beard Hatfield ('34), Sara E. Heatherly ('07), Sarah M Henderson, David Hesse, Marc B. Horin ('74), Michael J. Houlihan ('65), Jenny Huffaker, Gabriela Q Hurwitz, Joyce M. James ('72), Joanne C. Jensen ('88), Sexangary Johnson, Pamela Johnson, Brian J. Kim ('09), Claire H. Kohrman ('57), Dean M. Koutavas ('76), Heather J. Lakemacher ('09), Daniel & Barbara Lipstein, Steven L. Llanso ('71), Pamela Loewenstein ('57), Robert & Susan Lord, Richard A. Luecke ('66), John N. Maclean ('64), Richard A. McBride ('70), Marilyn M. McBride ('03), Colleen L. McCarroll ('76), Charlotte M. McGuinness ('72), Kathleen C. Moore ('83), David Neidorf, Chris ('02) & Jennifer ('02) Nelson, Gretchen Oh ('61), Kristen A. Olson ('93), Connie Ostrowski, Cheryl Park, Kathy Parry, William ('89) & Barbara Paterson, Mark Patterson, John ('75) & Linda Plantz, Carol Lively Platig, Esther M. Powell ('69), W. Eric Powell ('94), Maegan L. Reddick ('03), Mark & Rebecca Roop-Kharasch, M. Judith Roseman ('63), Charles & Renee Sahni, Gloria Scalzo, Horace P. Schmidt ('75), Rebecca Schroer ('50), David B. Shapiro ('80), Cassie Sherman, Linda Stabler, Christopher T. Stone ('72), April M. Stosur ('77), Cita Strauss, Paul W. Styles ('64), James G. Swanson ('71), Donald M. Switz ('56), David W Tarrant, Bart M. Taub ('72), Bev Thurber, Alison Timm, Warren Walfish ('72), Alan & Carole Weinman, Gerald Welch ('11), John P. Wendell ('76), David Rand Werrin ('67), David & Gertrude Whitacre, John Wold ('57), Gail D. Zona ('76)

\$1-\$49

Anonymous (3), Heidi Angeles, Barbara Aubin ('45), E A Baergen, Brett Bakshis, Catherine Barrier, John C. Bassette ('74), Emily Benedict ('13), Beverly Bennett, David Bohannon, Brandi C. Bowen ('96), Katherine A. Buchanan ('90), Hilary C. Bussell ('05), Sonia M Calles ('86), Candice Canton, Richard A. Cascio ('02), Jordan Clark, Shawn Clybor, Peter ('62) & Jacqueline ('67) Cooley, John W. Crane ('82), Gabriel R. Curio ('09), Otto W Dony IV, Lancelot Andreas Dyke ('09), Dorian Electra ('14), Diane M. Elliston ('72), Anna Lord ('98) & Alex Fleig ('96), Richard Charles Ford, Gregory L. Ford ('85), Cynthia Fox, Rosalie Garber, Scott ('74) & Margaret ('76) Gibbs, Anna E. Goldman ('06), Jennifer Goldman, Erik Graff, Yael Grauer ('02), Marilyn H. Grayless ('49), Anthony R. Gronner ('69), Denna Hackler ('96), Zachary Hamm ('07), Katie L. Harrell ('00), Ted K. Hechtman ('70), Julian D. Henderson ('93), Rick Henderson, Janet L. Hess ('70), Steven S. Hether ('70), Nicholas J Holt, James ('80) & Ellen Horan, Rubina Jane Isaac ('09), Warner W. Johnston ('73), Carol Kaiser, Dorothy L. Kamm ('78), Terry Kamms ('03), Brandee Kandle ('99), Elton Kelly ('08), Bruce C. Kennett ('72), Byron Keys ('08), Albert S. Kirsch, Stephen L. Kline ('73), Gladys I. Larem ('55), Catherine C Ledec, Debra Levy ('75), Robert ('56) & Barbara ('58) Long, John W. MacDevitt ('68), Martin Marks, Thomas Matysik ('13), George & Lisa Miller, Michael A. Miller ('66), Danny Miller, Dirk Neyhart ('69), Mary P Nivison ('77), Pablo Otavalo ('14), Ina & John Owen, Barbara Park, Allie Peluso ('11), MeganRose Philbin ('07), Michael J. Plonsker ('64), Sharon Post, Edward A. Quattrochi, Alice B. Racher ('41), Colleen Ramshur, Susan Kirschner-Robinson ('76) & Bradford Robinson, Margie-Kay Sejbl ('87), Keith A. Shanks ('67), James Lee Sherman ('63), Linda Sherman, Keetah G. Simonds ('02), Bowie Snodgrass, Jeff P. Sorensen ('02), Karen D. Stabler ('01), Gail Steiger ('72), Amanda Stilwell ('06), Arthur Wendel Stout IV, Mary A. Taft ('50), Matthew Thomas ('06), Jonathan Timm ('11), Mary Beth Timm, John A. Tuthill ('65), Peter Vincent ('11), Wangeeci Warui ('04), Delsa A. White ('64), Anne M. Whitmore ('70), David Williams, Dana Edwin Wilson ('57), Genevieve Wimp-McCann ('06), Sonia Wisniewski

We apologize for any errors or omissions – please contact the Office of Advancement at 312.235.3545 to make any corrections.

PPS: Your generosity is essential in ensuring Shimer's success – thank you so much for using the enclosed envelope to return your gift. If your friends & classmates aren't on this list, can you call & ask them to join you?

